

St. Martinville Wetland Assimilation Monitoring Report

July-September 2018



By: Robert R. Lane, PhD
Rachael G. Hunter, PhD
John W. Day, PhD
Comite Resources, Inc.
21245 Smith Rd.
Covington, LA 70435

For: Thomas Nelson, Mayor
City of St. Martinville
P.O. Box 379
St. Martinville, LA 70582-0379

September 27, 2018

WWW.COMITERES.COM



Comite Resources, Inc.
21245 Smith Road
Covington, LA 70435

John W. Day, Ph.D.
jwday@comiteres.com

Robert R. Lane, Ph.D.
rlane@comiteres.com

Rachael G. Hunter, Ph.D.
rhunter@comiteres.com

225-247-3917

225-439-3931

St. Martinville Wetland Assimilation Monitoring Report

Summary of Activities: July-September

Site visits

July 3, 2018: Comite Resources field technicians Jason Day and Joel Mancuso visited the St. Martinville assimilation wetlands to carry out monthly monitoring. Leaf litter biomass was collected from each study site. Due to dry conditions dissolved oxygen, conductivity, temperature, salinity and pH were only measured at the Discharge Pipe (pipe #5). Discharge Pipe 5 had only been on for 24 hrs at the time of sampling. There was no flow from the Out site to the Cypress Island Coolie.

Discrete water quality data from the St. Martinville assimilation wetlands on July 3, 2018.

	DO (mg/L)	Cond (mS)	Temp. (°C)	Sal (PSU)	pH	Water Level (cm)
PIPE	4.4	2464.2	30.8	1.2	8.0	.
1T	<1cm
3T	<1cm
3M	<1cm
3O	<1cm
6T	<1cm
6M	<1cm
Ref N	<1cm
Ref S	<1cm



Leaf litter box at the Ref-S site on July 3, 2018.

August 17, 2018: Comite Resources staff traveled to the St. Martinville assimilation wetlands to carry out monthly monitoring. Dissolved oxygen, Conductivity, Temperature, Salinity, pH were measured at 6T and 6M and the Discharge Pipe (pipe #6). All other sites did not have any aboveground water. Leaf litter biomass and staff gauge readings were taken at all sites.

Discrete water quality data from the St. Martinville assimilation wetlands on August 17, 2018.

	DO (mg/L)	Cond (mS)	Temp. (°C)	Sal (PSU)	pH	Water Level (cm)
PIPE	1.8	2521.0	29.1	1.2	7.1	.
1T	<1cm
3T	<1cm
3M	<1cm
3O	<1cm
6T	1.1	1999.1	28.9	1.0	7.0	11.7
6M	0.9	2037.7	30.0	1.1	6.9	6.3
Ref N	<1cm
Ref S	<1cm

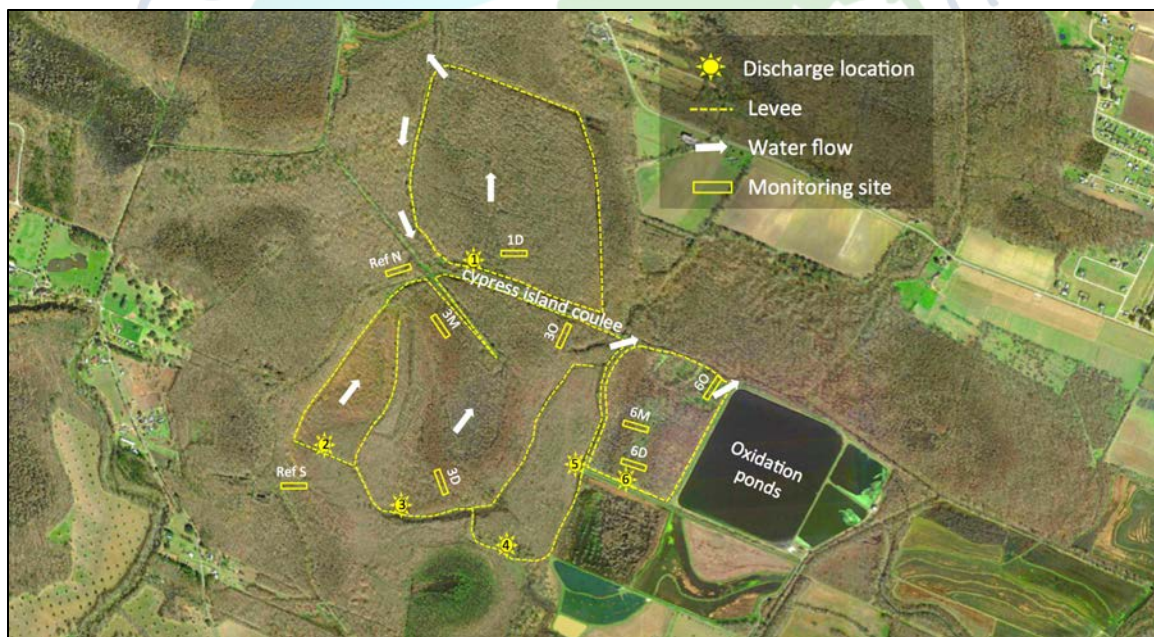


A feldspar marker horizon at site 3M on August 17, 2018.

September 7, 2018: Comite Resources personnel Jason Day and Joel Mancuso visited the St. Martinville assimilation wetlands to conduct monthly monitoring. Leaf litter biomass was collected at all sites except 3O due to high water. Dissolved oxygen, conductivity, temperature, salinity and pH were measured at all sites except 3M, 3T, and Ref-S due to low or no surface water. Measurements were also taken at the discharge pipe (Pipe #1). Cypress Island Coulee was high and backing up into the 3O site.

Discrete water quality data from the St. Martinville assimilation wetlands on September 7, 2018.

	DO (mg/L)	Cond (mS)	Temp. (°C)	Sal (PSU)	pH	Water Level (cm)
PIPE	1.3	2245.0	25.3	1.2	7.2	1.3
1T	1.0	2384.0	25.5	1.2	7.1	5.2
3T	<1cm
3M	<1cm
3O	1.0	261.3	26.1	0.1	7.5	<1cm
6T	0.2	2422.8	26.4	1.2	6.6	1.7
6M	0.9	2001.6	25.4	1.2	6.8	2.4
Ref N	1.1	344.6	25.9	0.2	6.8	3.3
Ref S	<1cm



Map of sampling locations in the St. Martinville assimilation wetlands.